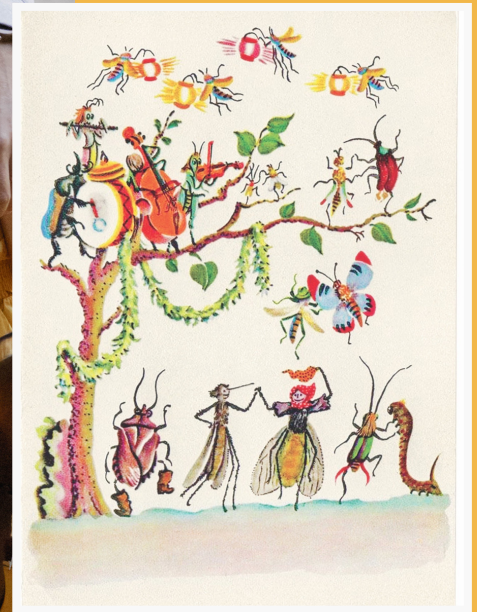




Beneath A Tree - Baroque To Folk connects and inspires audiences through musical innovation. Diverse programming dissolves the barriers between genres and exposes listeners to their similarities — our vibrant music is for everyone.



Beneath  
A Tree

Gail Hernández Rosa & Daniel Turkos

Beneath A Tree - Baroque To Folk

[beneathatree-baroquetofolk.com](http://beneathatree-baroquetofolk.com)

[faieviolin@gmail.com](mailto:faieviolin@gmail.com)

215-873-6186



# Beneath A Tree

Baroque To Folk

Beneath A Tree - Baroque To Folk (BaT) is a multi genre ensemble based in San Francisco, CA, featuring the core duo of Gail Hernández Rosa and Daniel Turkos. Along with various collaborators, BAT performs eclectic programs on historical instruments, including baroque violin, viola, cello & contrabass, harpsichord, baroque guitar & theorbo, and a four course cittern/Irish bouzouki, whose bright and cheerful timbre provides a unique counterpoint to the gut-strung instruments.

In 2017, BAT began in Chester County, PA with a residency at the Kennett Brewing Company. These Sunday afternoon performances included standard folk, Celtic, and bluegrass repertoire combined with baroque and classical music. A curious and exciting fusion was born — those who came to listen to folk music loved the pairing with baroque: and those who came to listen to baroque loved the folk! Thus began BAT's mission of introducing baroque and folk repertoire to varied audiences, breaking the stigmas attached to both genres.



BAT is a product of 20th c musicians and the access to vast music libraries. A thirty minute YouTube “binge” could include legendary performances of Bill Evans at the Village Vanguard, followed by the Buena Vista Social Club, and concluding with Bach's B Minor Mass performed by the Monteverdi Choir & John Elliot Gardiner. It is through the natural progression of musical curiosity that we seek to find the kinship between genres and their roots in folk music.



The performance of early music is a noble and necessary act in preserving musical traditions. Similarly, the same care is present in all genres. Beneath A Tree explores the interrelationships found between composed and traditional music from the baroque period, brings these idioms together and combines them with historically informed performance (HIP) practices, instruments and performers.

Members of Beneath A Tree have studied historical performance at institutions including The Royal Academy of Music (UK), Juilliard 415, San Francisco Conservatory of Music, Yale University, Peabody Institute, Royal Conservatoire The Hague, and the Hartt School. Individuals perform in early music ensembles such as American Bach Soloists, Philharmonia Baroque, Tempesta di Mare, Washington Bach Consort, Gabrieli Consort and Players, Florilegium, Scottish Chamber Orchestra, Ruckus, Trinity Wall Street and The Chivalrous Crickets

BaT is the recent winner of Early Music America's National Showcase.

Our venue performances and concert series include the California Jazz Conservatory, SF Conservatory, 5th Street Berkeley, CounterPulse, Philadelphia Art Museum, St. Ignatius, Holly Innocents & Music at the Ü's.



We were featured at the Boston Early Music Festival Fringe.

Our upcoming album, *My Cup of Tea* was recorded at St. Stephen's Belvedere with early music recording engineer Andrés Villalta.

BaT performs at private events and house concert series.

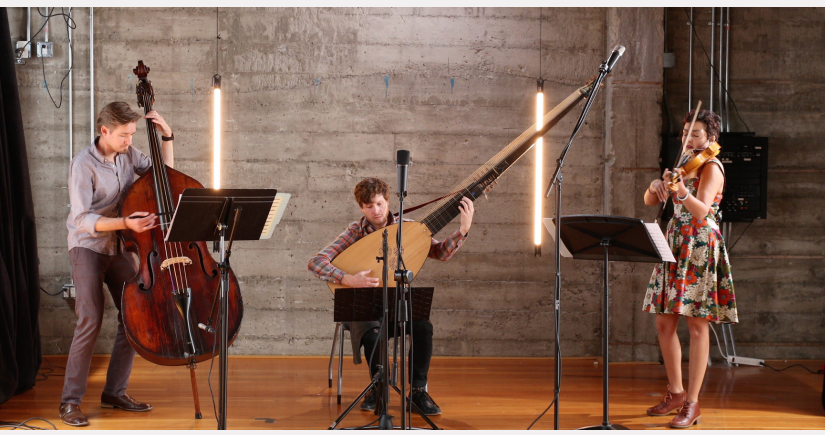
WATCH OUR RECENT PROJECTS

**EARLY MUSIC AMERICA  
ARTIST SHOWCASE**

Dan Turkos, Paul Holmes Morton & Gail Hernández Rosa



PARTING GLASS -TRADITIONAL SCOTTISH



GABRIELLI SONATA NO.1 G MAJOR 2ND VERSION  
Videography by Lukas Productions

"This Performance featured what every good Baroque outing must have: a decisive, forward moving bass line from the continuo instruments. The energized and nuanced phrasing by the cello and double bass enlivened the lower part of the musical structure."

Oregon Artswatch

"The Brandenburg Concerto in D major was given an unmistakable gigue (jig) treatment. Equally engaging were the vocals provided by Turkos and Hernández Rosa."

The Rehearsal Studio

"Hernández Rosa told Nagy that her two loves are early music and folk music, and that she often imagines Telemann and Bach hearing fiddle tunes in the local pubs. She went on to introduce one of her recent projects — transforming Telemann's "Gigue" from his Sonata in D into a piece of folk music. The video of Hernández Rosa, Daniel Turkos on bass, and Paul Holmes Morten on Baroque guitar did make you want to move your feet."

Cleveland Classical

"From Handel's Sonata in D through Bach and Telemann and on to Jazz and Folk music they set the mood for a delightful afternoon. We were so impressed with their musicality and versatility. I look forward to hearing them play again."

Barbara C.

*“Whatever you think you can do, and believe you can do, begin it. Action has magic, grace and power in it”*

— G H O E T H E

## *My Cup of Tea*

*Selections include the music of J.S Bach, Biber, Telemann and traditional folk tunes with BaT's own compositions and arrangements. The album highlights the similarities found between the music Bach & Telemann composed, and what they may have heard after work at the pub!*

For Bookings Contact

Gail Hernández Rosa

Daniel Turkos

[beneathatree-baroquetofolk.com](http://beneathatree-baroquetofolk.com)

[faieviolin@gmail.com](mailto:faieviolin@gmail.com)

215-873-6186



Nellie Kane



Photography by Tay Lauren

*"Beneath A Tree is the most versatile and entertaining ensemble on the early music scene today!" - Mary T.*



Beneath  
A Tree

